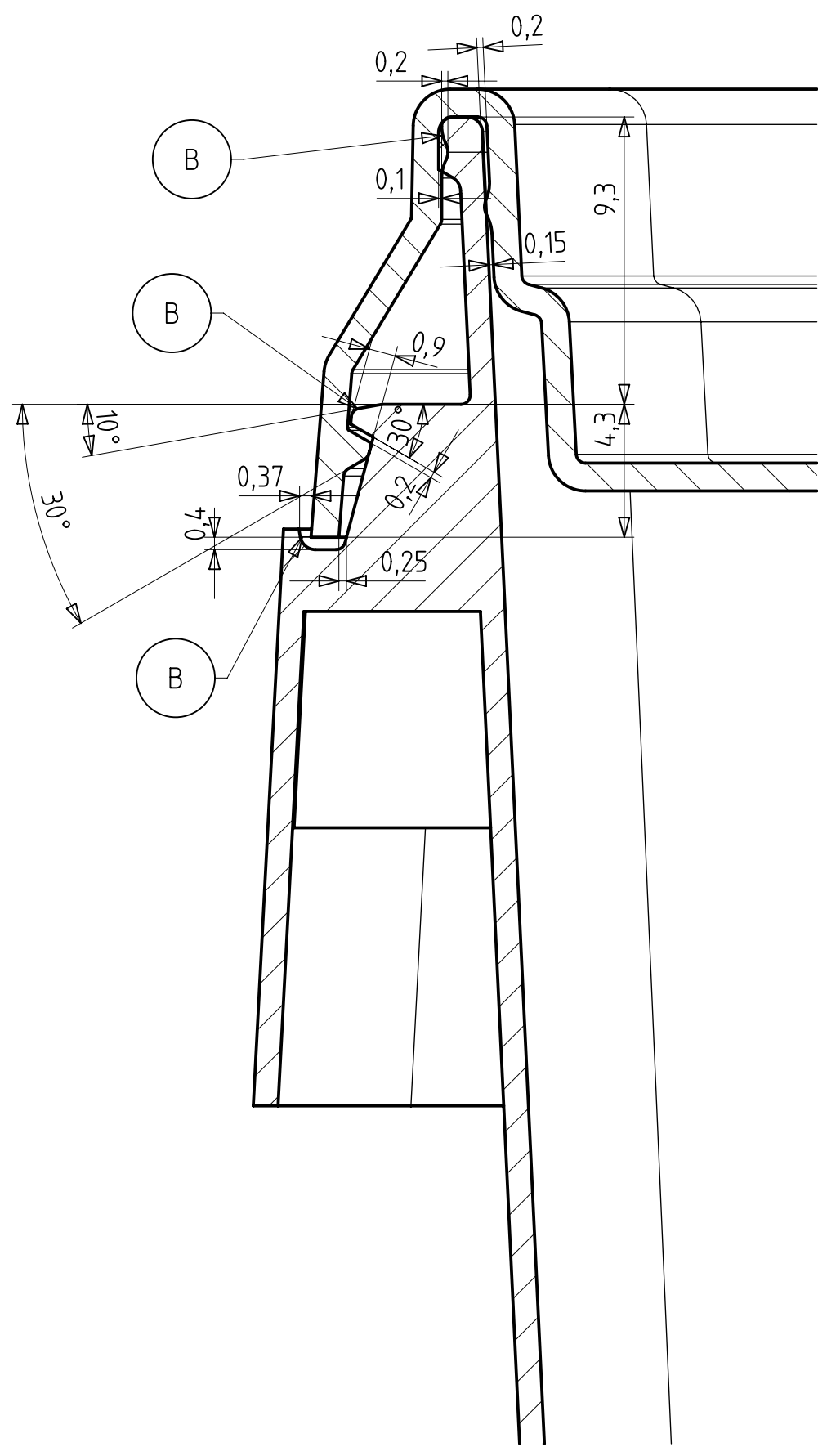
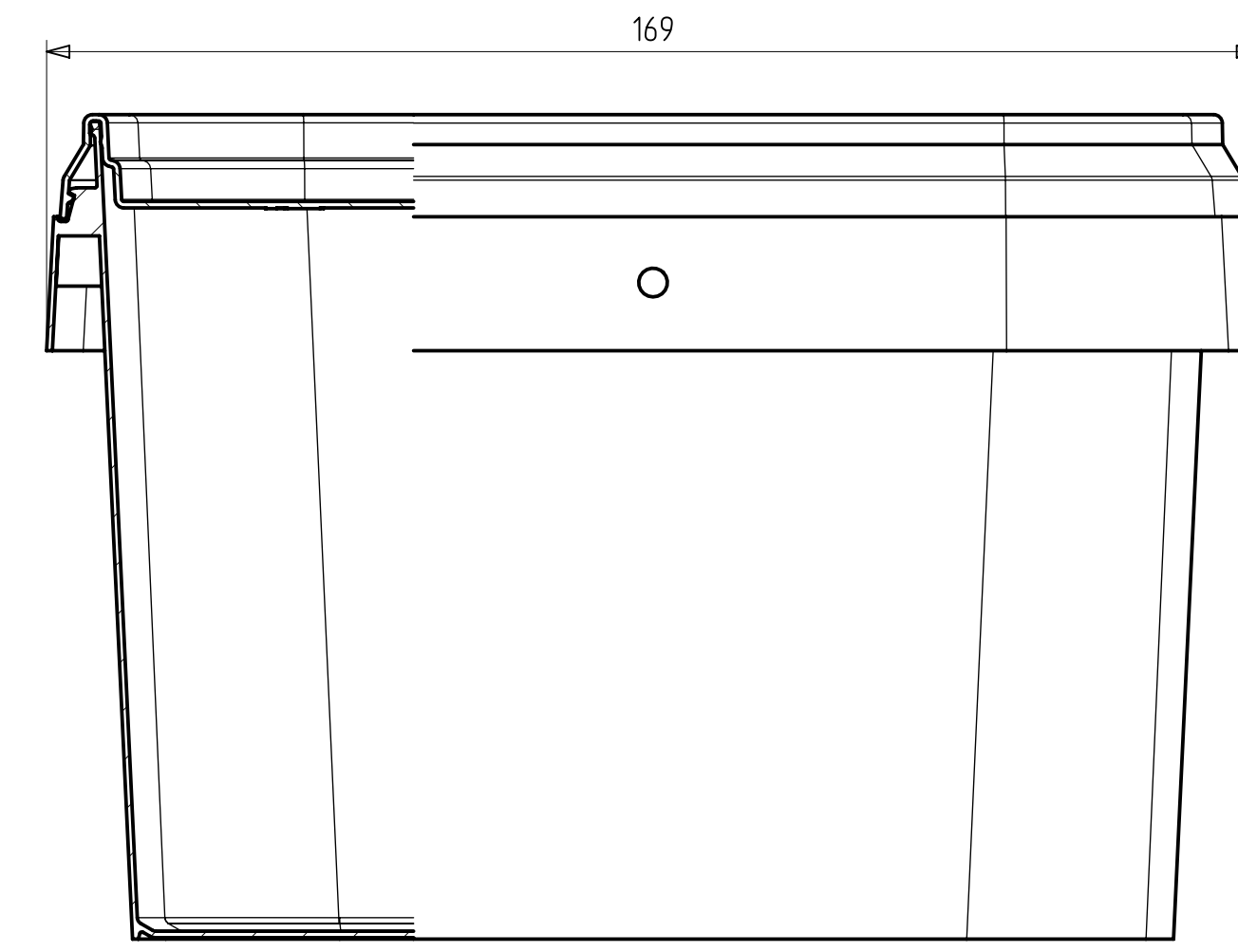


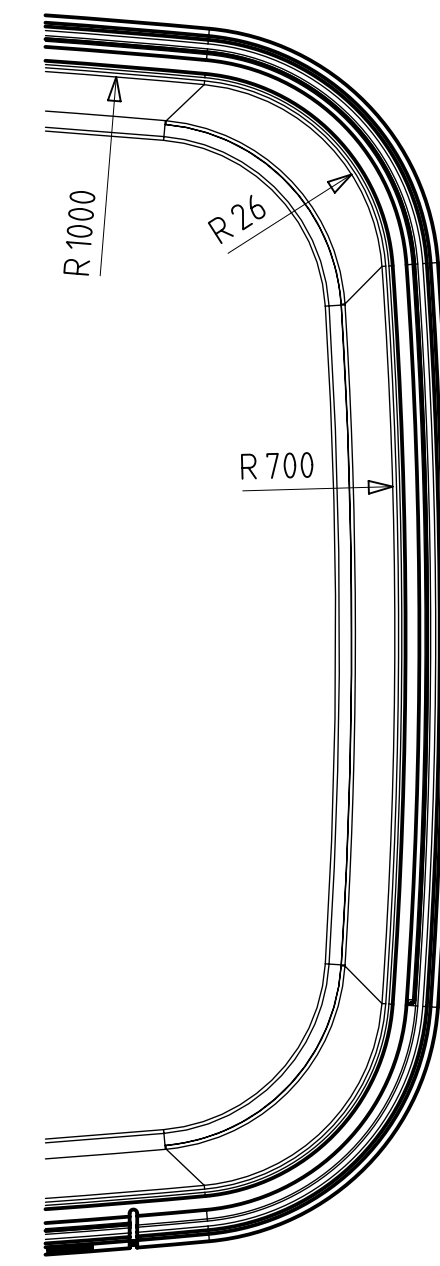
Detail W
M 5:1



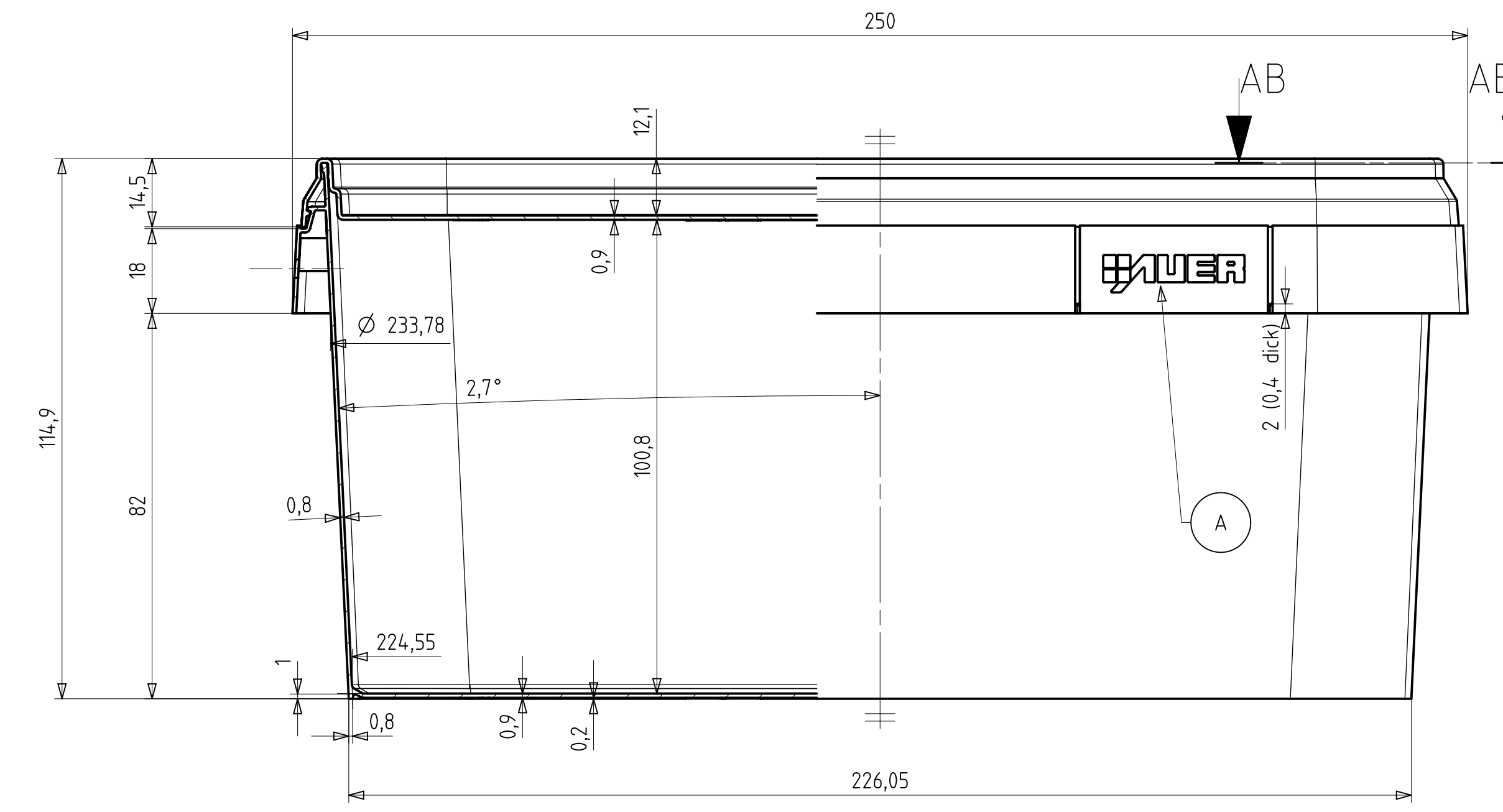
Schnitt C-C



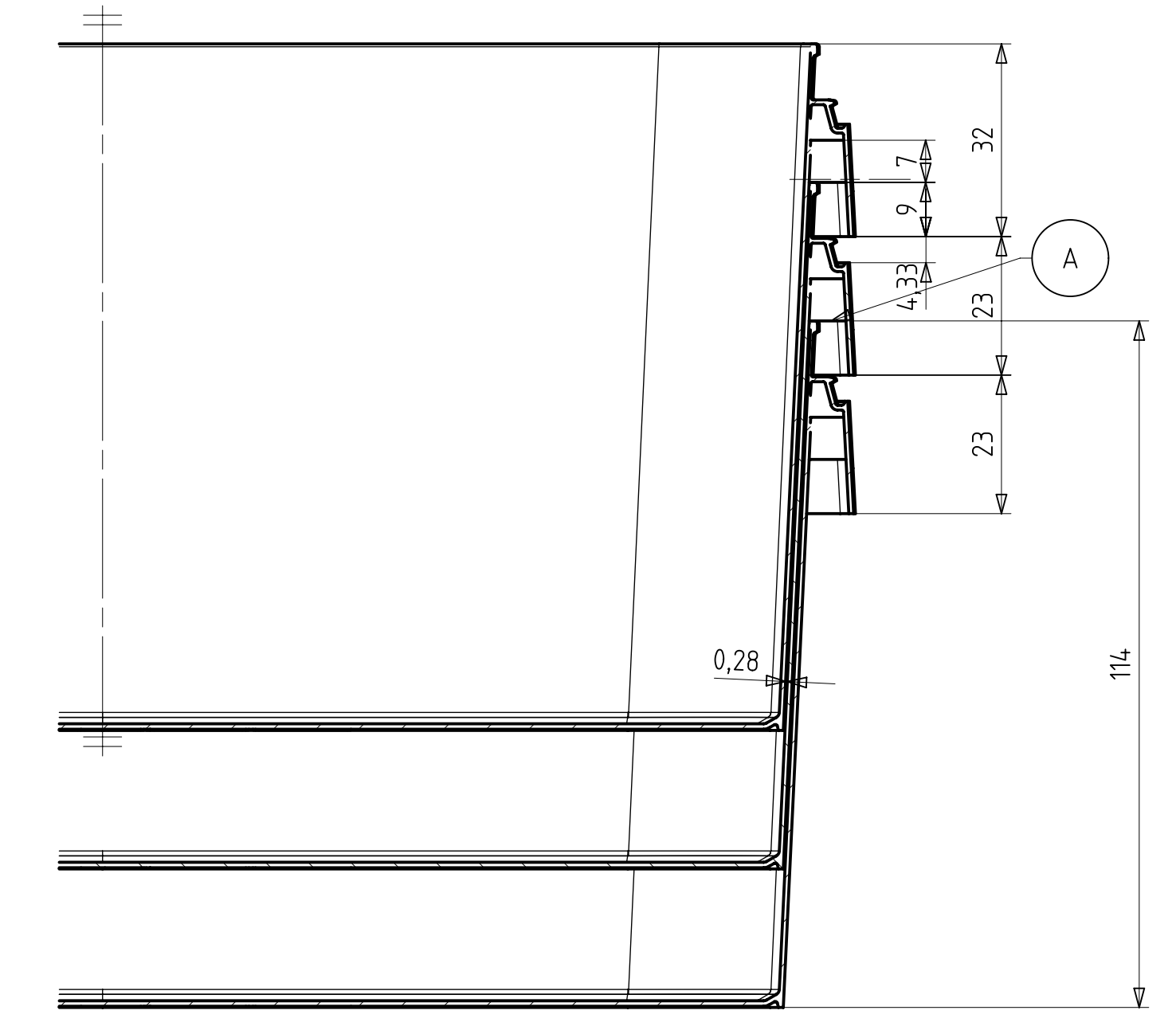
Schnitt AB-AB



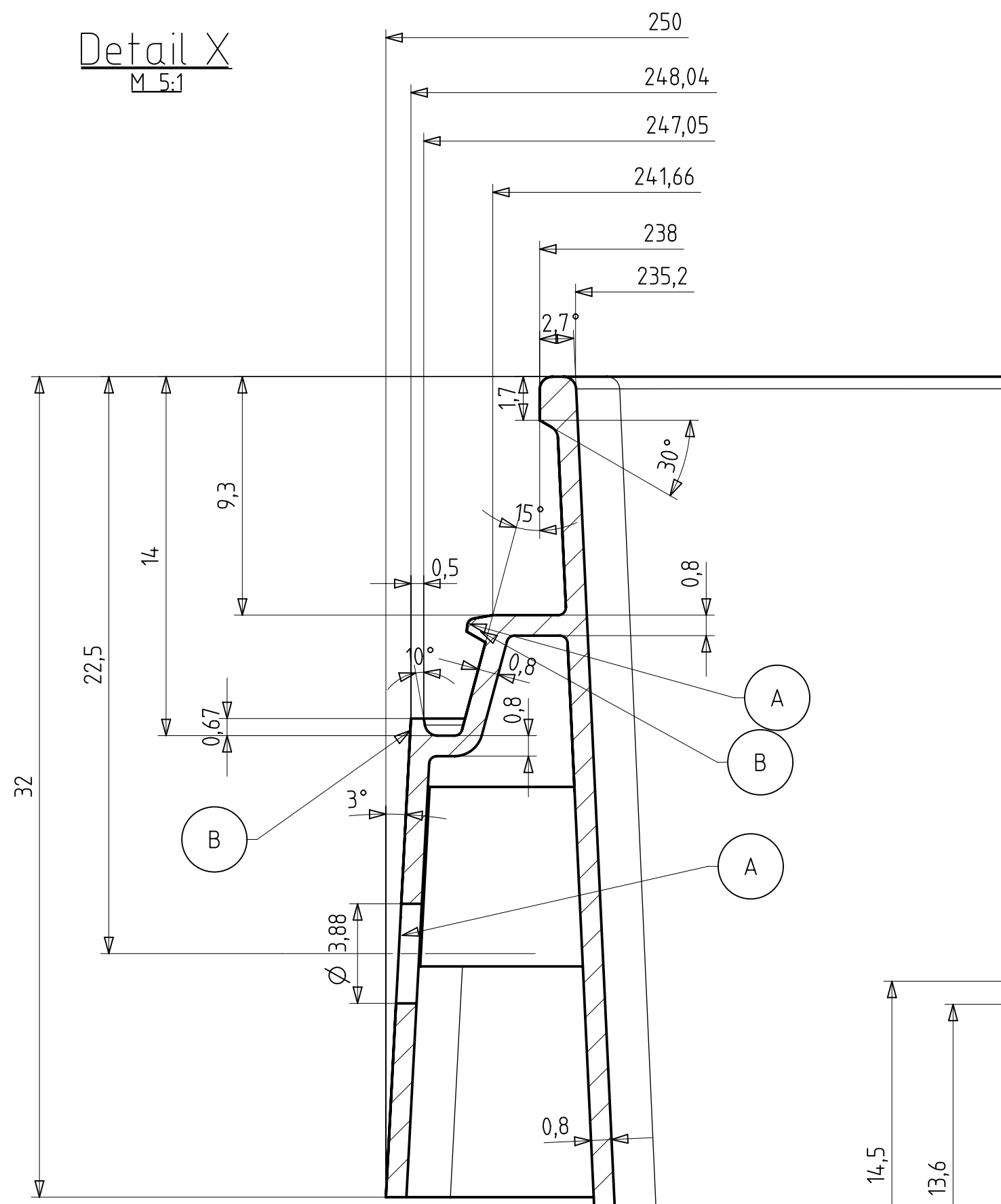
Schnitt A-A



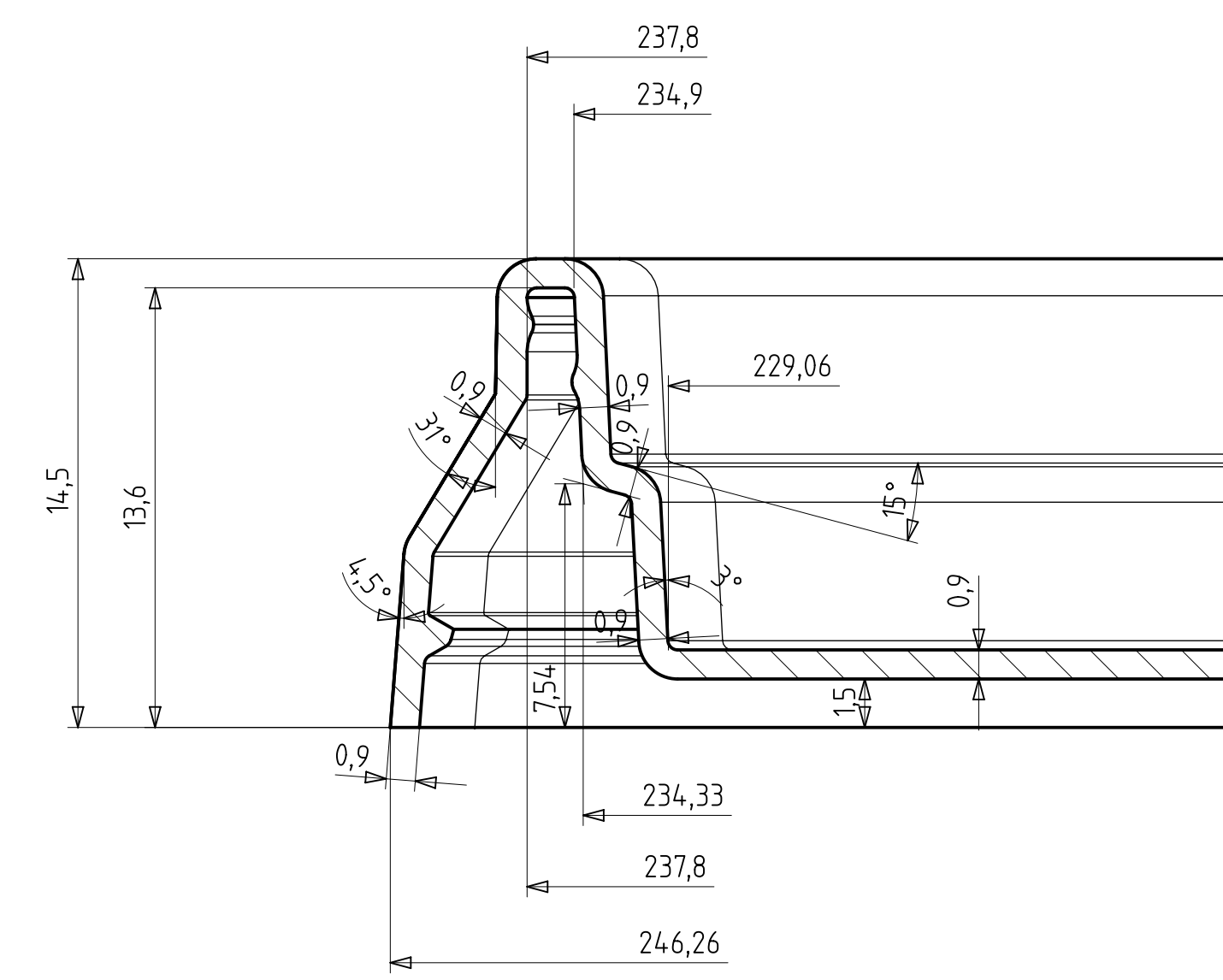
Schnitt B-B



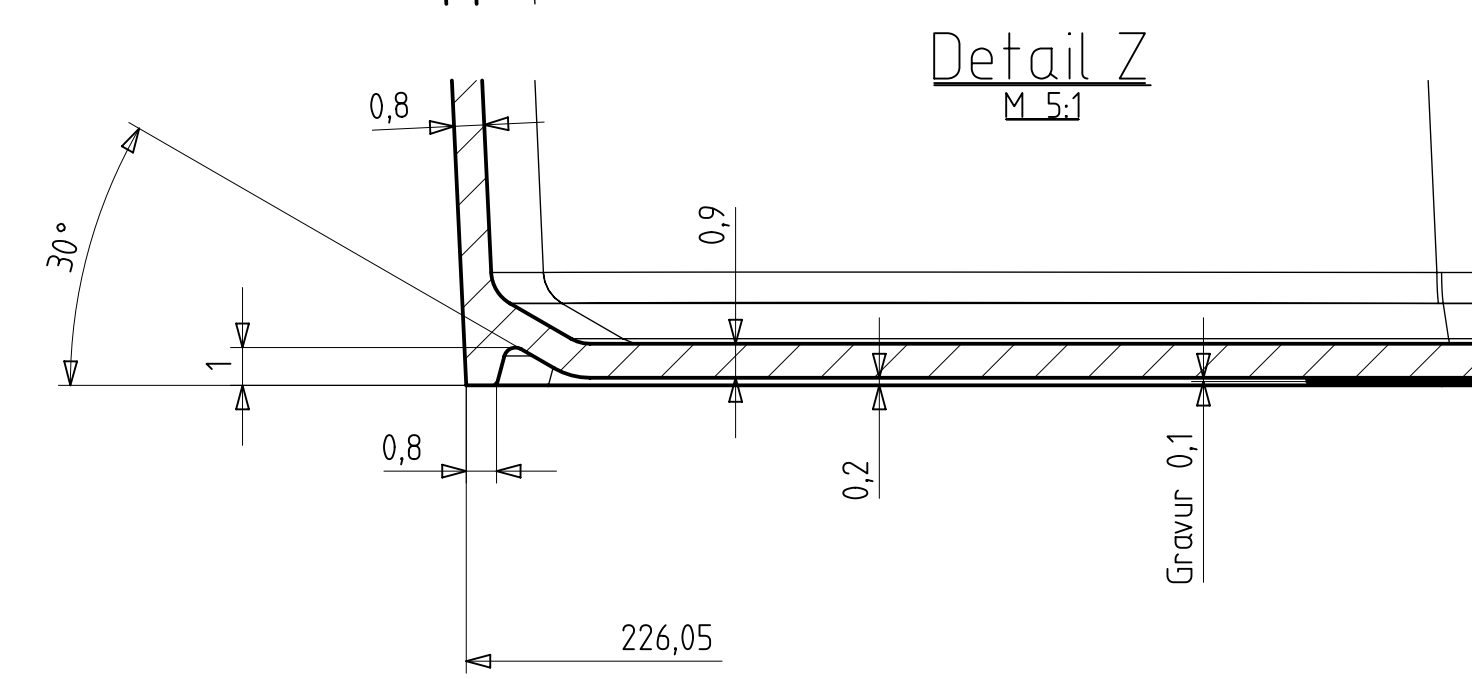
Detail X
M 5:1



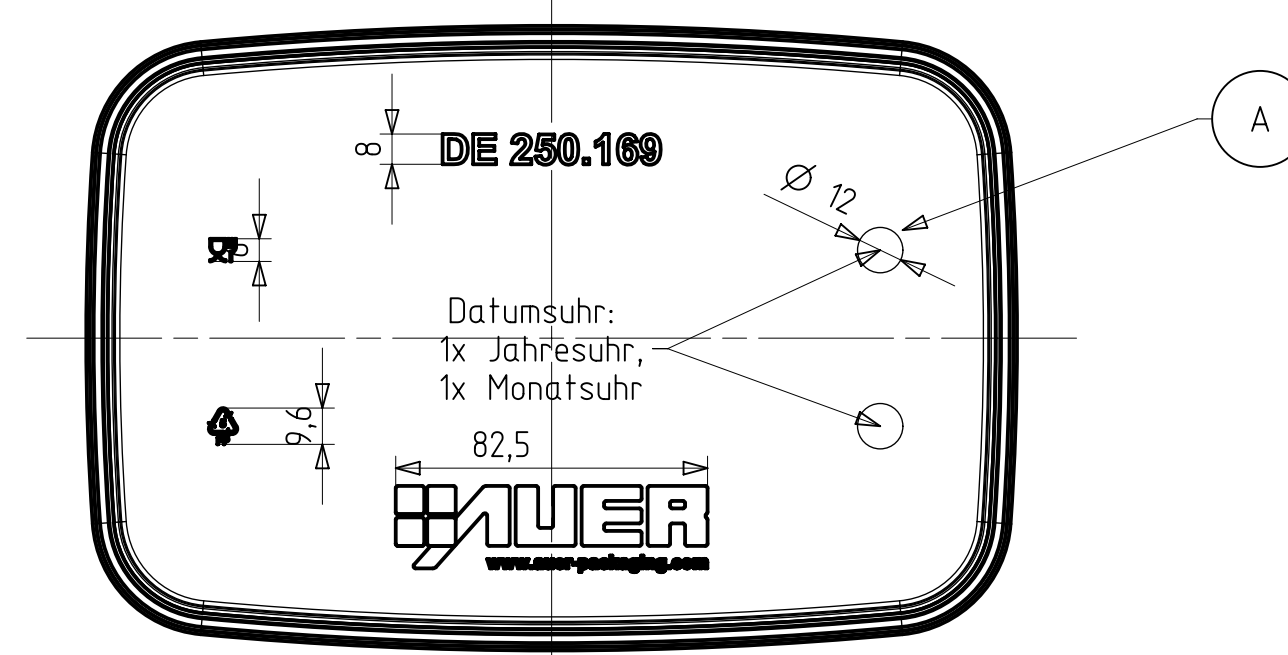
Detail Y
M 5:1



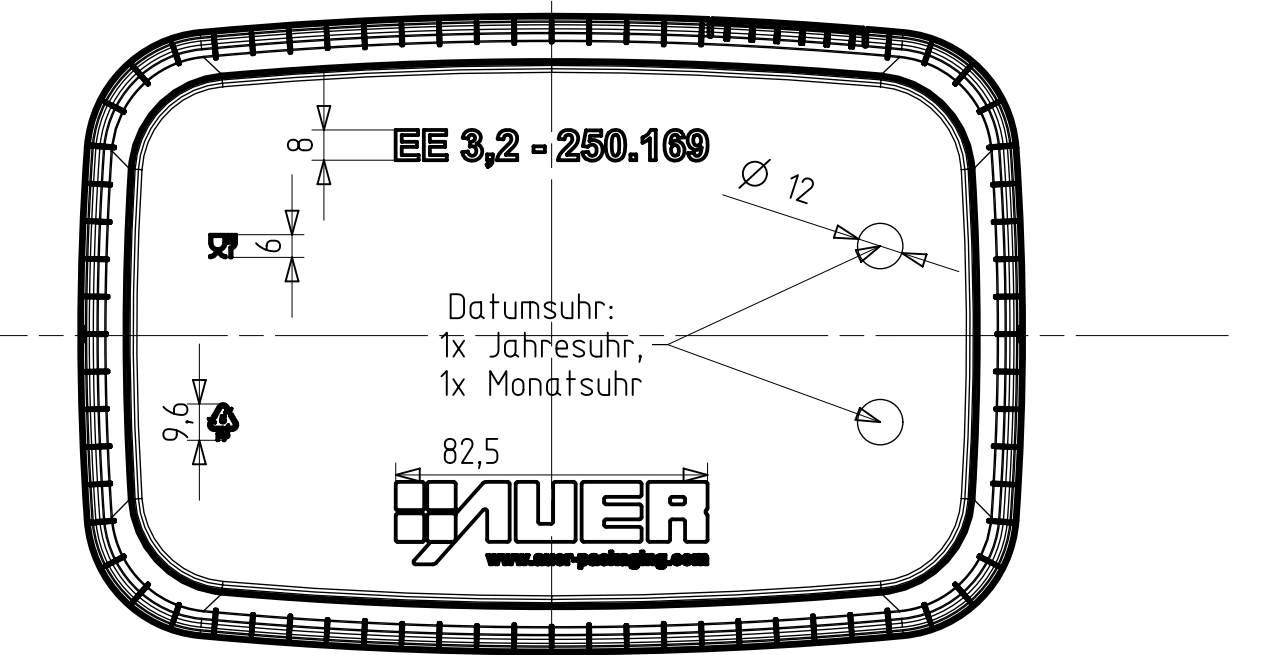
Detail Z
M 5:1



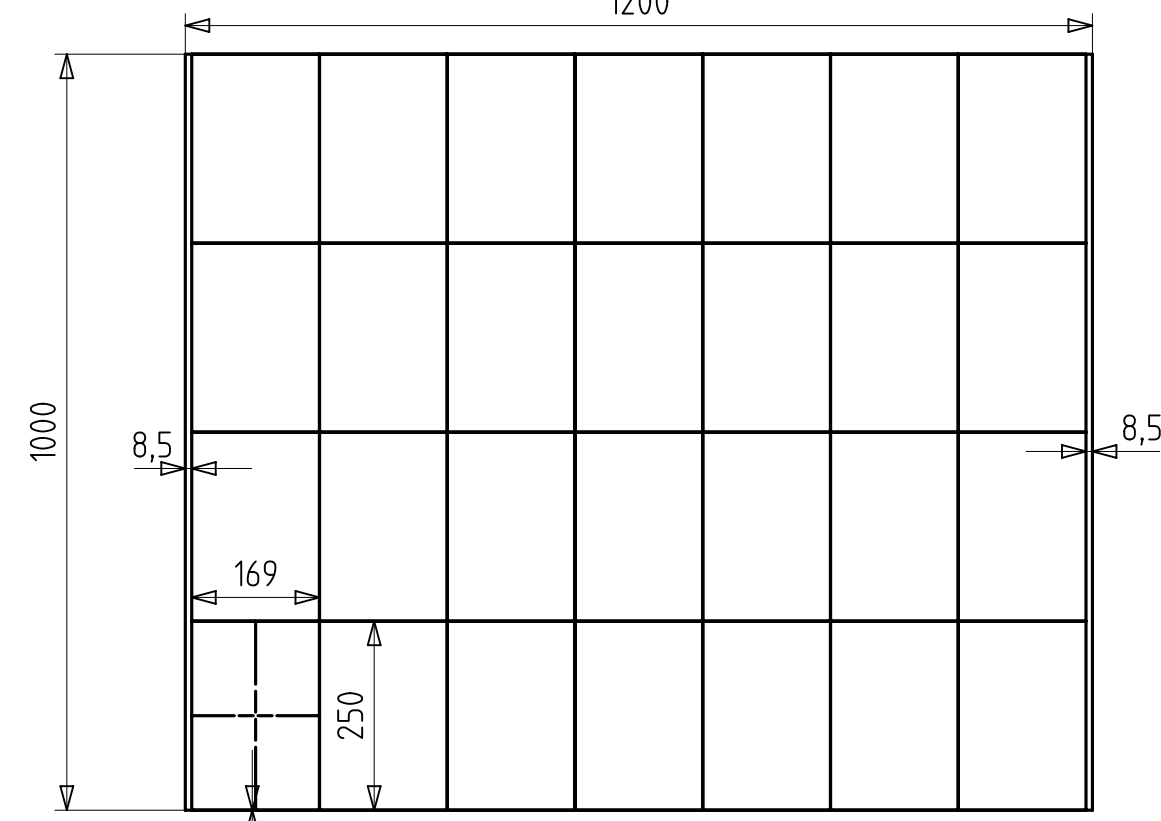
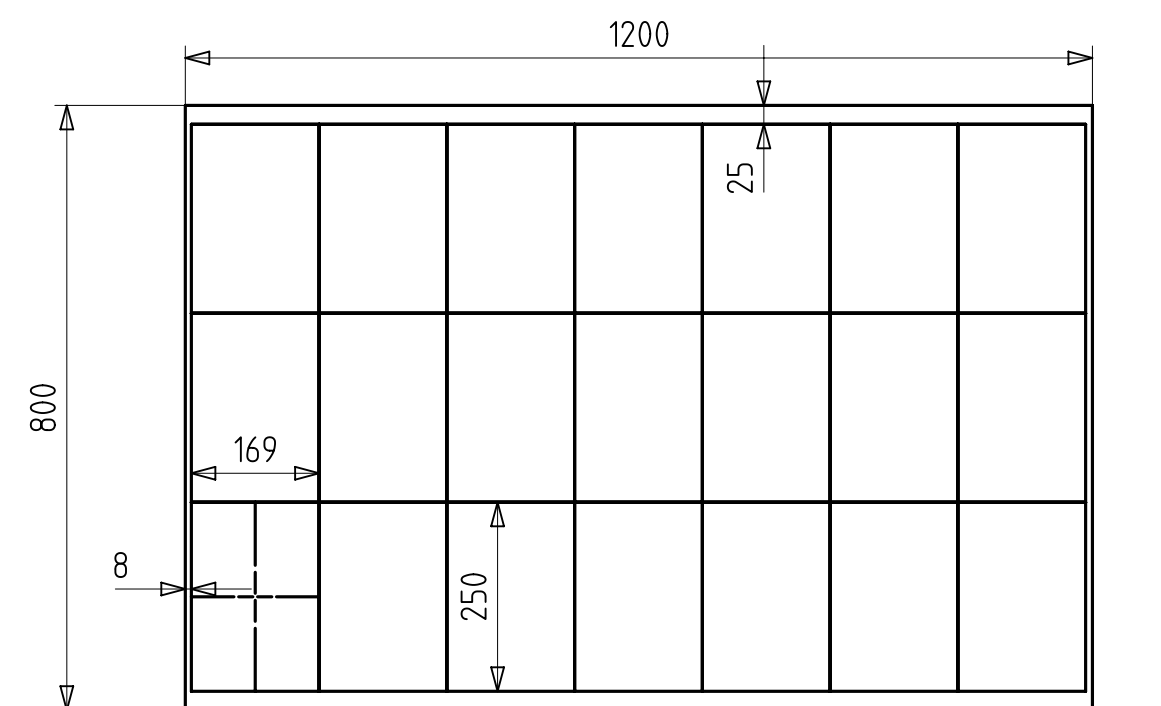
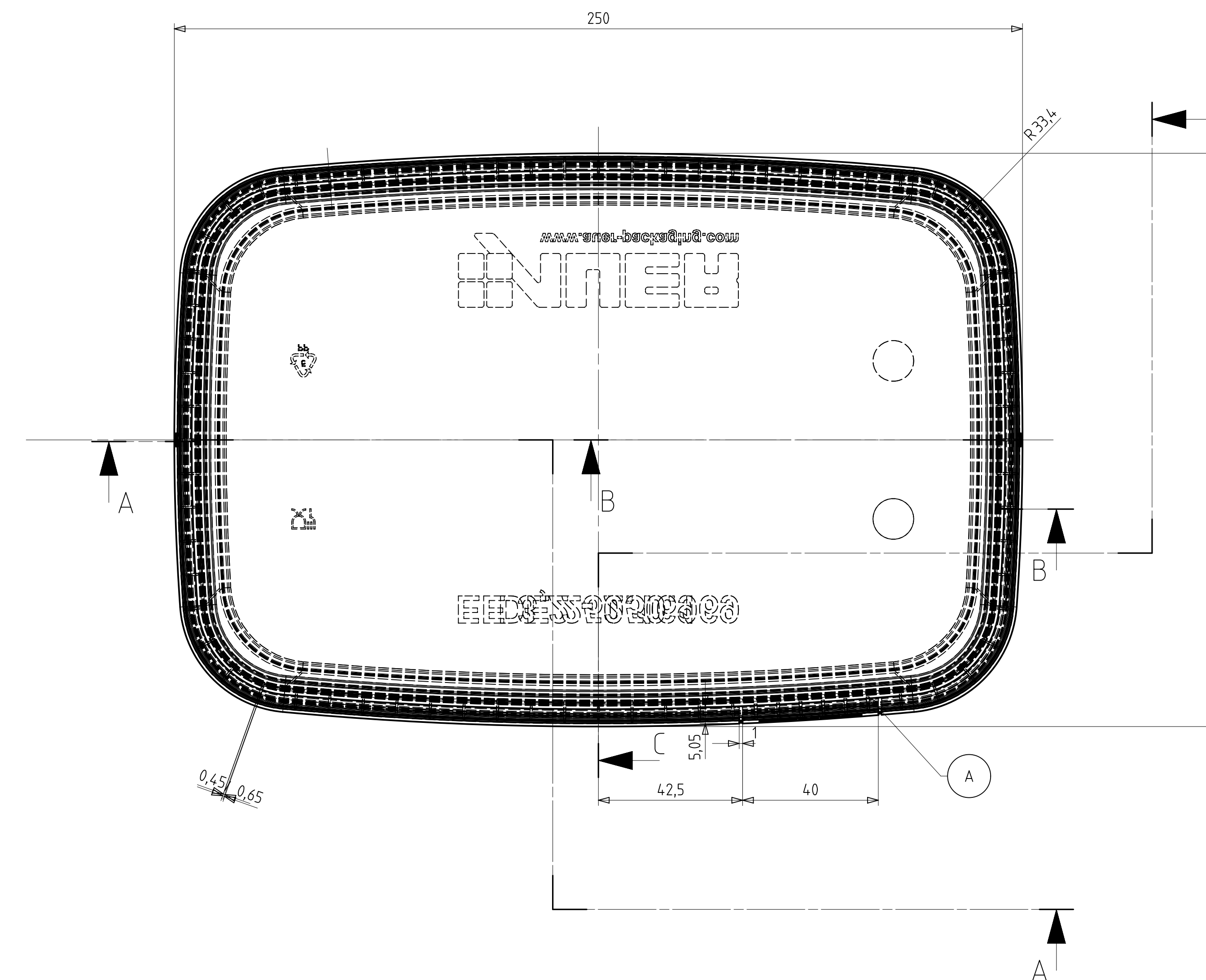
Ansicht Deckel von unten



Ansicht Eimer von unten



Ansicht von oben
Eimer mit Deckel



Volumen Eimer bis Deckelunterkante: 3,21dm³
Volumen Eimer bis Eimeroberkante: 3,67dm³
Artikelvolumen Eimer: 110,78cm³
polierte Fläche Eimer: 23,9 dm²
polierte Fläche Deckel: 10,6 dm²
Artikelvolumen Deckel: 49,28cm³

AUER Packaging GmbH Am Krall 25/27 D-49329 Astenberg		Messstab 1:1 2013 1023 + 2013 1030	
	<small>Datum</small> Beaufr. 12.02.2014	<small>Nachtr.</small> M.S.	Eimer eckig 3,2l
	<small>Gepr.</small> Norm.		+ Deckel eckig 250,169
<small>B</small> <small>Herzogenbrunn</small>	<small>10.10.2014</small> <small>MS</small>		
<small>A</small> <small>17.06.2014</small> <small>MS</small>			
<small>Erst</small> <small>Änderung</small>	<small>Datum</small>	<small>Name</small>	